

## **Modular Control Enclosures CC-4000 / CC-4000 SL**

Modern industrial design

# Modular Control Enclosures at the highest level

The **CC-4000 / CC-4000 SL** are modular aluminium control enclosure systems. With their outstanding technical features, the enclosures simply and efficiently encapsulate industrial controllers and operator control panels for centralised and decentralised automation in production processes.

The enclosure depth of the **CC-4000** can be adapted precisely to your controller. Based on aluminium frame sections with depths of 52, 80, 140, 200 and 290 mm with extension sections with depths of 68, 128 and 228 mm, depending on the size of the controller, you can choose **depths** between **52 mm** and **646 mm**. Your selected width or height is produced by correspondingly cutting and machining the aluminium sections.

Thanks to its **elegant, slimline** design, the **CC-4000 SL** is the ideal addition to the BERNSTEIN CC-4000 range of control enclosures.

The modern, dynamic industrial design of the enclosure gives the entire machine or system a high-quality appearance. Tailored to the size of the controller or operator control panels, a corresponding aluminium section configuration can be selected from the extended range of enclosures. Two enclosure depths (external dimensions: **55** and **99** mm) are possible.

In most applications it is necessary to mount the enclosure on a machine or wall. The following BERNSTEIN **suspension systems** are ideally suited for this purpose:

- Light-duty suspension system CS-2000 SL
- Suspension system CS-3000
- System 80 suspension system

Selection of the suitable system depends on the arm length and the total weight of the enclosure. The enclosure sections are prepared (machined) corresponding to the specific suspension system. We would be pleased to assist you in selecting the right system for your application.

## Product features

- Modern monitor-based industrial design
- Modular system made from high-grade cast aluminium with functional surface finish
- Choice of other colours (RAL)
- Heat dissipation suitable for industrial applications without reducing protection class
- Integrated handle elements that make the enclosure easy to handle while underscoring the monitor characteristics
- Protection class IP 65
- All-round mounting grooves for built-in components, no need for modifications

- Internally and externally mounted front panel possible
- Door configurations for direct access

## Approvals

- UL 50 Type 12 (label on demand)



## CC-4000 / CC-4000 SL



**BERNSTEIN System Solutions**

Expertise from under one roof

### **Comprehensive range of services from BERNSTEIN**

Thanks to a comprehensive range of accessories, the modular control enclosures concept can be perfectly adapted to your requirements:

- Suspension system components for attaching on the top and on the bottom
- Different keyboard solutions
- Connecting elements for console versions
- Different interface solutions
- Internal, external fans or air conditioner
- Cable routing components

# Modular Control Enclosure CC-4000



Opening CC-4000 enclosure from front with hinged frame section.



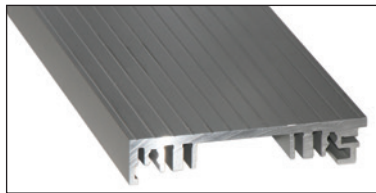
Opening CC-4000 enclosure from rear with flush-closing door.



Opening CC-4000 enclosure and detaching entire frame section at articulated hinges.



The ergonomically formed handles at the front of the enclosure make safe handling easy.



External view of aluminium section. Generously sized cable channels on the inside. Direct screw mounting of components or mounting with easy-to-fit spring nuts.



Combined, frame and expansion sections with different widths make up your specified control enclosure depth.

## You determine the type of access

- Hinged rear panel
- Frame sections as front door, also for hinge-mounted controller
- Frame or extension section (rear door) with articulated hinge (fixed or detachable)

The detachable version makes it possible to replace the complete module together with the built-in controller for servicing purposes.

## System features

The single-walled aluminium section offers outstanding heat dissipation properties which are significantly superior to two-walled enclosures where the air trapped between the walls acts as an insulator.

For more demanding requirements, the heat dissipation can be further enhanced and adapted to defined operating conditions by incorporating optional measures such as heat sink rear panel, internal fans or even an air conditioner.

You will find further details in our range of accessories for control enclosures in our catalogue Enclosure systems.

We would be pleased to assist you in selecting the right system for your application.

## Stand / console version



### Your benefits

- Ergonomically arranged and attractive industrial PC workstation
- Adjustable inclination of the control enclosure and of the keyboard console for the benefit of the users
- Cable duct integrated at the rear, concealed by a cover panel
- Cables and connectors can be routed directly to the attached control enclosure or keyboard console through the coupling head
- Vertically adjustable support feet as well as a set of castors for mobile applications that can be fitted directly to the stand are available as accessories.

### **BERNSTEIN CS-3000 Curved tube**

Attractive design,  
easy installation,  
easy cleaning

### **NEW at BERNSTEIN: CS-3000 curved tube**

- Special design
- Ease of assembly and installation thanks to the bent tube version
- Simple cable routing without any joint
- Protection from impact and injury to the operator when using suspension system elements on the bottom of the enclosure

# Modular Control Enclosure CC-4000 SL for high-quality machines and installations



Comparison of handle sections:  
Left: CC-4000 SL Right: CC-4000



Variety of mounting options thanks to all-round mounting grooves.



Flush-closing door in the rear.

## Product features

Thanks to its elegant, slimline design, the CC-4000 SL is the ideal addition to the BERNSTEIN CC-4000 range of control enclosures.

The modern, dynamic industrial design of the enclosure gives the entire machine or system a high-quality appearance. Tailored to the size of the controller or operator control panels, a corresponding aluminium section configuration can be selected from the extended range of enclosures.

With its many outstanding technical features the enclosure makes it easy to encapsulate the controllers cost-effectively.

## Open for your applications

The control enclosure range CC-4000 SL ensures absolute flexibility with its extensive range of accessories and coordinated system consisting of control enclosures, suspension system components and stand.

Without the need for mechanical modifications, built-in components are easy to mount and remove with the aid of spring nuts in the all-round mounting grooves in the enclosure.

Rationalisation effects thanks to timesaving installation and servicing.



## Modern industrial design

### System features

- Modern monitor-based industrial design
- Slimline design for configuring small visualisation systems
- Two enclosure depths
- Variety of mounting options thanks to all-round mounting grooves
- Heat dissipation suitable for industrial applications without reducing protection class
- Protection class IP 65

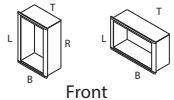
# Checklist - Enclosure CC-4000

Customer	*Product group	*Code	*Article number
Address			Customer No.
Telephone	Telefax	Industry	
Contact person			Department
<input type="checkbox"/> Pricing enquiry			
			Target price
			Quantity
<input type="checkbox"/> Enquiry			
			*Enquiry No.
			Annual requirement
<input type="checkbox"/> Order			

Delivery date

## 1 Enclosure

- Standard
- Console encl., upper section
- Console encl., lower section



Anticipated installation weight  
\_\_\_\_\_ kg

## 2 Dimensions (mm)

### External encl. dimensions

Width x height (W x H) \_\_\_\_\_ X \_\_\_\_\_

**19" Enclosure** W x H \_\_\_\_\_ X \_\_\_\_\_

H = (n x HM) + 97 - 1 HM = 44,45 HM = \_\_\_\_\_

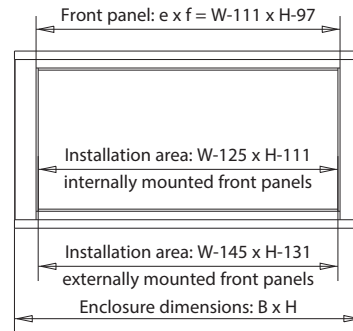
\*Front panel dim. (e x f) \_\_\_\_\_ X \_\_\_\_\_

e x f = W - 111 x H - 97

\*\*Rear panel dim. (w x h) \_\_\_\_\_ X \_\_\_\_\_

W x H = W - 61 x H - 47

W x H = W - 63 x H - 47 (hinged rear panel)



## 3 Type of section

- Section without ribbing

## 4 Enclosure depth, ext.

### Frame section

- with 3 mm deep FP support
- 140  200  290

### Extension

- 68  128  228  128  68

- or \_\_\_\_\_ → with 6,5 mm deep FP support
- 52  80

- 68  128  228  128  68

Internal depth for internally mounted FP with 3 mm deep FP support

When using 6,5 mm FP support, the internal depth is reduced by 3,5 mm

Section	52	80	120	140	148	180	188	200	208	216	248	268	276	280	290	308	328	336	348	358	368	376	396	408	418	426	428	436	456	486	496	518	A**		
	38	66	106	126	134	166	174	186	194	202	234	254	262	266	276	294	314	322	334	344	354	362	382	394	404	412	414	422	442	472	482	504	I**		
52	●		●			●	●				●			●		●			●					●											
80		●			●				◆	●			◆			◆		■				●		●					◆						
140				●					●			●	●								●		●						●				●		
200								●				◆					●	◆						◆			●			●				◆	
290															●						●					●	●							●	
68			●		●		●		●	●	●	◆	◆					◆	●	●			●	◆			●		●		●	◆			
68							●			●			●					◆								●									
128						●			◆		●	●	◆			●	●	■	●					◆	●	●			◆	●	●	●	●		
128																●		■						●											
228														●		◆			●			●	●		●			●	◆	◆		◆	◆	●	

\*\* A = External depth, I = Internal depth

Internal depth is increased by 6 mm for external mounting.

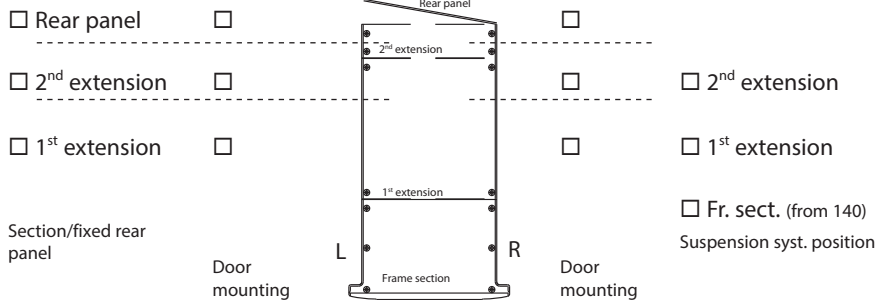
◆ ■ = Alternative combination

\* Completed by BERNSTEIN AG



### 5 Door mount. (susp. syst.)

Automotive version



### 6 Partition

not mount.

**vertical**

mount.on right

**horizontal**

bottom mount.

Qty \_\_\_\_\_

mount. on left

Qty \_\_\_\_\_

top mounted

Operator panel, anodis., int. mount.

Dim.: g x h (g = Width, h = Height)

1<sup>st</sup> operator panel \_\_\_\_\_ x \_\_\_\_\_

2<sup>nd</sup> operator panel \_\_\_\_\_ x \_\_\_\_\_

3<sup>rd</sup> operator panel \_\_\_\_\_ x \_\_\_\_\_

(Important! Partition height for frame section with 3 mm FP support = 20 mm/front panel support 6.5 mm = 25 mm)

### 7 Front panel

none

with  3 mm, int. mount.

3 mm, ext. mount.

### Rear panel

none

ext. screw-mounted

heat sink rear panel

standard hinge

screw-moun. rear pan. art hinge

### Access., front panel

for INTERNALLY mounted panels: seal strip and mounting material

for EXTERNALLY mounted panels: seal strip/washers/nuts M5

19" installation kit (9806232000): screws and captive nuts M6

set of clamping elements for SIMATIC Panel PC

### Keyboarddrawer from 180 mm depth

(2HM = 89 mm, 3HM = 134 mm)

without keyboard, 0°, without lock, 2HM

without keyboard, 20°, without lock, 3HM

with keyboard, 0°, without lock, Germ., PS2, 2HM

with keyboard, 20°, without lock, Germ., PS2, 3HM

to customer specification (description under 13)

### 8 Lock

Square (mm):  6  7  8 (Standard) Triangle (mm):  7  8

Two-way bit (mm):  3  5

Daimler Benz  T-handle without lock

T-handle with lock

Customer specification

### 9 Preparation for susp. syst.

#### Type of coupling

Turn/tilt coupling (from section 128)

Flange (see System)

Tilt adapter (from section 200)

Coupling head CC-4000

Console connector

Automotive adapter

KDL 16/4

only with automotive adapter without SS preparation (KDL = cable gland strip)

Grommet 3-4 mm

\_\_\_\_\_ Qty

No

WS coupling

CS-3000/48

Special preparation  
to customer specificat.

KDL 24/5

Grommet 6-7 mm

\_\_\_\_\_ Qty

#### System

SL (only section 80)

CS-3000 (fr. sect. 128)

80 (from section 128)

SS cover, top

SS cover, bottom

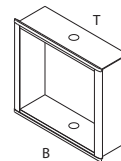
SS in section \_\_\_\_\_

Dummy grommet

\_\_\_\_\_ Qty

Top

Bottom



### 10 Surface finish

Horizontal sections:

Vertical sections:

Partition:

Front panels:

Rear panels:

#### Standard

RAL 7043, power-coated

anodised, natural

RAL 7043, power-coated

anodised, natural

anodised, natural

#### Customer specification

\_\_\_\_\_

\_\_\_\_\_

\_\_\_\_\_

\_\_\_\_\_

\_\_\_\_\_

11  Automotive version: double GK seal, braided earthing strap, front door arrester

12  Climate control data for checking heat dissipation over enclosure surface

\_\_\_\_\_ (Pv) total installed power loss

\_\_\_\_\_ (°C) ambient temperature at enclosure location

\_\_\_\_\_ (°C) max. temperature, installation (e.g. PC)

\_\_\_\_\_ (V) power supply for active cooling

### 13 Accessories, Remarks

annexes

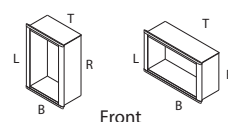
no annexes

# Checklist - Enclosure CC-4000 SL

Customer	*Product group	*Code	*Article number
Address			Customer No.
Telephone	Telefax	Industry	
Contact person			Department
<input type="checkbox"/> Pricing enquiry			
		Target price	Quantity
<input type="checkbox"/> Enquiry			
		*Enquiry No.	Annual requirement
<input type="checkbox"/> Order			
Delivery date			

## 1 Enclosure

- Standard
- Console enclosure, upper section
- Console enclosure, lower section



Anticipated installation weight \_\_\_\_\_ kg

## 2 Dimensions (mm)

### External enclosure dimensions

Width x height (w x h) \_\_\_\_\_ x \_\_\_\_\_

### 19" Enclosure

\_\_\_\_\_ x \_\_\_\_\_

$H = (n \times HM) + 73 - 1 \text{ HM} = 44,45$        $HM \cong$  \_\_\_\_\_

### Front panel dim. (e x f)

\_\_\_\_\_ x \_\_\_\_\_

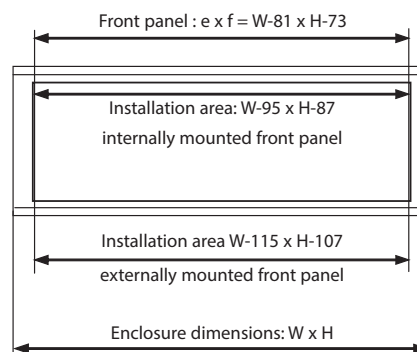
$e \times f = B - 81 \times H - 73$

### Rear panel dim. (w x h)

\_\_\_\_\_ x \_\_\_\_\_

$w \times h = W - 31 \times H - 23$

$w \times h = W - 33 \times H - 23$  (hinged rear panel)



## 3 Type of section

- Section without ribbing

## 4 Enclosure depth, ext. (frame section with 6.5 mm deep FP support)

- 55
- 99

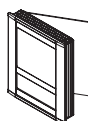
Section	55	99	External depth (mm)
	35	79	Internal depth (mm)

(Internal depth increased by 6 mm for external mounting)

## 5 Door mounting

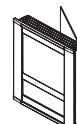


- Fixed rear panel



Door mounting, **left**

- Standard hinge
- Screw-mount. rear pan. articul. hinge



Door mounting, **right**

- Standard hinge
- Screw-mounted rear panel articulated hinge

\* Completed by BERNSTEIN AG

**6 Partition** (Important! Partition height for frame section = 25 mm)

 not mounted(Standard)

 vertical

\_\_\_\_\_ Qty.

 waagerecht

\_\_\_\_\_ Qty.

 mounted on right

 mounted on left

 bottom mounted

 top mounted

 operator panel anodised, natural  
(not mounted for inside) s = 3 mm

 Dimension: g x h  
(g = Width, h = Height)

 1<sup>st</sup> operator control pan. \_\_\_\_\_ X \_\_\_\_\_

 2<sup>nd</sup> operator control pan. \_\_\_\_\_ X \_\_\_\_\_

**7 Front panel**
 none

**with:**  3 mm, int. mounted

 3 mm, ext. mounted

**Accessories, front panel**
 for INTERNALLY mounted panels: seal strip and mounting material

 for EXTERNALLY mounted panels: seal strip/washers/nuts M5

 19" installation kit (9806232000): screws and captive nuts M6

 set of clamping elements for SIMATIC Panel PC 670/870

**Rear panel**
 none

**with:**  3 mm, externally screw-mount.

 3 mm, hinged

**8 Lock**

 Square (mm):  6

 7

 **8 (Standard)**
 T-handle without lock

 Triangle (mm):  7

 8

 E1

 Two-way bit (mm):  3

 5

 Special lock/customer specification

 Daimler Benz: 
**9 Preparation for suspension syst.**  No

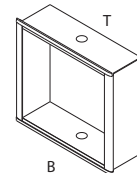
**Type of coupling/system**
 SL flange / turn/tilt coupling (only section 99)

 Coupling head CC-4000

 Special preparation to customer specification

 Top

Side:

 Bottom

**10 Surface finish**

Horizontal sections:

Vertical sections:

Partition:

Front panels:

Rear panels:

**Standard**
 RAL 7043, power-coated

 anodised, natural

 RAL 7043, power-coated

 anodised, natural

 anodised, natural

**Customer specification**
 \_\_\_\_\_

 \_\_\_\_\_

 \_\_\_\_\_

 \_\_\_\_\_

 \_\_\_\_\_

**11 EMV Version** (electromagnetic compatibility)

 Conductive connection between enclosure body, door, FP and RP

**12**  Automotive version; braided earthing strap

**13**  Climate control data for checking heat dissipation over enclosure surface

\_\_\_\_\_ (PV) total installed power loss

\_\_\_\_\_ (°C) ambient temperature at enclosure location

\_\_\_\_\_ (°C) max. temperature of installation (e.g. PC)

\_\_\_\_\_ (V) power supply for active cooling

**14 Accessories, Remarks**  annexes  no annexes



**Switch systems –  
Economy meets safety**



**Sensor systems –  
Compact intelligence**



**Enclosure systems –  
Function and design**

[www.bernstein.eu](http://www.bernstein.eu)

## Contact

**International Headquarters  
BERNSTEIN AG**  
Hans-Bernstein-Str. 1  
32457 Porta Westfalica  
Fon +49 571 793-0  
Fax +49 571 793-555  
info@de.bernstein.eu  
www.bernstein.eu

**Denmark  
BERNSTEIN A/S**  
Fon +45 7020 0522  
Fax +45 7020 0177  
info@dk.bernstein.eu

**France  
BERNSTEIN S.A.R.L.**  
Fon +33 1 64 66 32 50  
Fax +33 1 64 66 10 02  
info@fr.bernstein.eu

**Italy  
BERNSTEIN S.r.l.**  
Fon +39 035 4549037  
Fax +39 035 4549647  
info@it.bernstein.eu

**United Kingdom  
BERNSTEIN Ltd**  
Fon +44 1922 744999  
Fax +44 1922 457555  
info@uk.bernstein.eu

**Austria  
BERNSTEIN GmbH**  
Fon +43 2256 62070-0  
Fax +43 2256 62618  
info@at.bernstein.eu

**Switzerland  
BERNSTEIN (Schweiz) AG**  
Fon +41 44 775 71-71  
Fax +41 44 775 71-72  
info@ch.bernstein.eu

**Hungary  
BERNSTEIN Kft.**  
Fon +36 1 4342295  
Fax +36 1 4342299  
info@hu.bernstein.eu

**China  
BERNSTEIN Safe Solutions  
(Taicang) Co., Ltd.**  
Fon +86 512 81608180  
Fax +86 512 81608181  
info@bernstein-safesolutions.cn